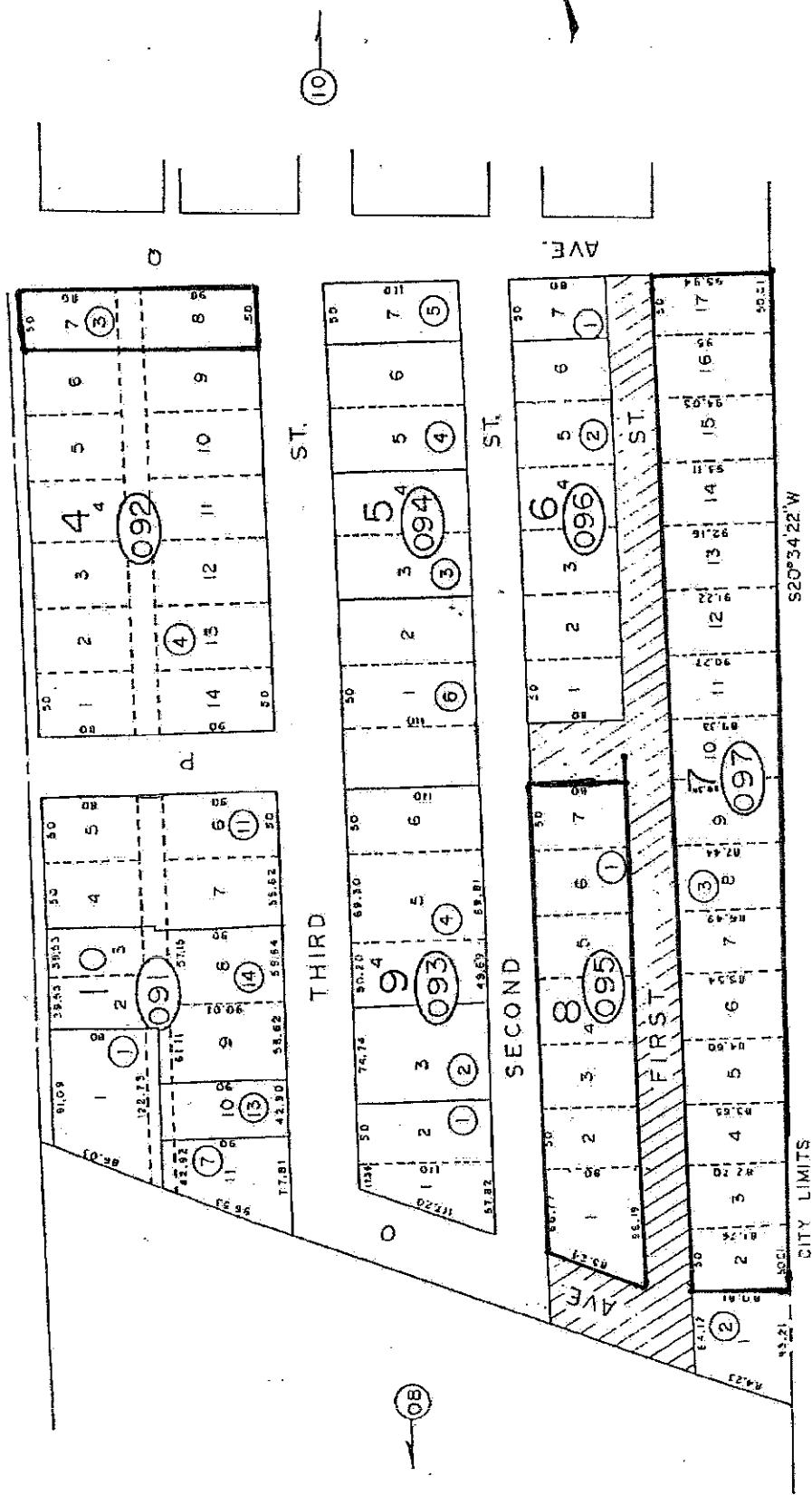


004-092-03
004-095-01
004-097-03

N19°29'22"E CITY LIMITS

FOURTH (U.S. HWY 50 & 93) ST.



McGILL
White Pine

NOTE: This plat is for assessment use only and does not represent a survey. No liability is assumed as to the accuracy of the data delineated hereon. Use of this plat for other than assessment purposes is forbidden unless approved by the Dept. of Taxation. Or White Pine County Assessor Office.

REV. JULY 76/DL
McGILL
White Pine